

Cape Cod Community College
ENROLLMENT QUICK FACTS
 Spring 2022

<u>Headcount/FTE</u>	<u>#</u>	<u>% change from prior year</u>
Headcount	2333	↓ -9.7%
Credits	18574	↓ -10.9%
FTE	1238.3	↓ -10.9%

<u>Number Course Sections Offered</u>			
All Sections****	423		
DE Eng	0	ESL	3
DE Math	7	Online	269
Average Class Size =	12	Hybrid	27

DEMOGRAPHIC CHARACTERISTICS

<u>Gender*</u>	<u>#</u>	<u>%</u>
Female	1487	65%
Male	815	35%
<i>Unknown/Not reported</i>	31	----

Race/Ethnicity*

Am Ind/Alask Nat.	9	<1%
Asian	62	3%
Black, non-Hispanic	182	8%
Cape Verdean	14	1%
Hispanic/Latino	279	12%
Native Haw/Pac Isl.	4	8%
Two or More Races	116	5%
White, non-Hispanic	1577	70%
<i>Unknown/Not Reported</i>	88	4%
<i>Non-Resident Alien</i>	2	< 1%

Age*

< 18	52	2%
18-19	355	15%
20-24	931	40%
25-34	567	24%
35-44	270	12%
45-54	104	4%
55-64	35	2%
65+	15	1%
<i>Unknown/Not Reported</i>	4	----
<i>Median Age</i>	22	----
<i>Mean Age</i>	25.0	----

Town of Residence (80% draw towns only)

Barnstable	461	20%
Yarmouth	231	10%
Falmouth	188	8%
Plymouth	160	7%
Sandwich	145	6%
Bourne	130	6%
Dennis	111	5%
Mashpee	103	4%
Harwich	88.0	4%
Martha's vineyard	79.0	3%
Nantucket	71.0	3%
Brewster	57.0	2%
Wareham	51.0	2%

ENROLLMENT CHARACTERISTICS

<u>Fulltime/Parttime Status</u>	<u>#</u>	<u>%</u>
Full-time	555	24%
Part-time	1778	76%

Matriculation Status

Non-matriculating	456	20%
Matriculating	1877	80%

Credentials Sought

Associate of Science	748	40%
Associate of Arts	941	50%
Certificate	184	10%
Focus Areas	4	0%

Percent based on Matriculating Students only

New/Continuing Status

Continuing Students	1682	72%
New Students	651	28%
<i>First Time Degree Seeking</i>	91	14%
<i>Transfer In</i>	108	17%
<i>Readmit</i>	94	14%
<i>Non-Degree Seeking</i>	358	55%

Accumulated Credits at Semester Start

0 Credits	494	21%
1-20 Credits	871	37%
21 - 30 Credits	272	12%
31+ Credits	696	30%

Enrollment In . . .

...1 or more day course	1492	64%
...1 or more online course***	2018	86%
...1 or more wkd course	21	1%
...1 or more evening course	538	23%
...1 or more DE Writing course	0	0%
...1 or more DE Math course	102	4%
...1 or more ESL course	19	0%
...1 or more Honors course	29	1%

Non-Credit "Special Program" Enrollment**

ACCESS	211
Project Forward	47

*Percentages based on total reported information; for race/ethnicity, calculation also excludes non-resident aliens

**Students in these programs are NOT INCLUDED elsewhere in document unless also enrolled in credit programs

*** Online includes hybrid courses also

**** Sections count includes co-ops, practicums, internships, work experience, directed studies, and independent studies

Cape Cod Community College
ENROLLMENT QUICK FACTS
 Spring 2022

Chart 1. Headcount and FTE, 5-Year Trend

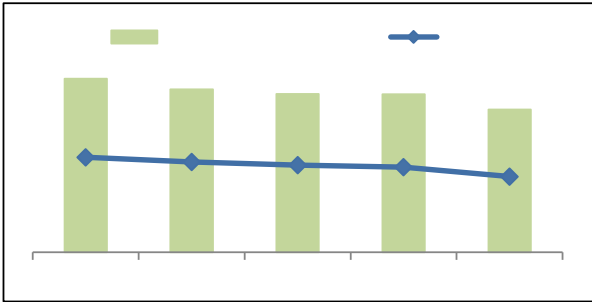


Chart 2. Gender Distribution, 5-Year Trend*

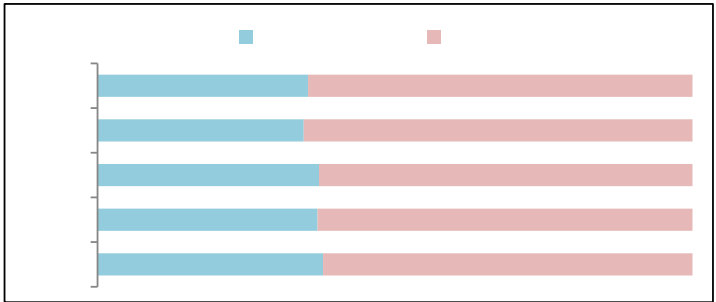


Chart 3. Percent FULL-TIME Students, 5 Year-Trend

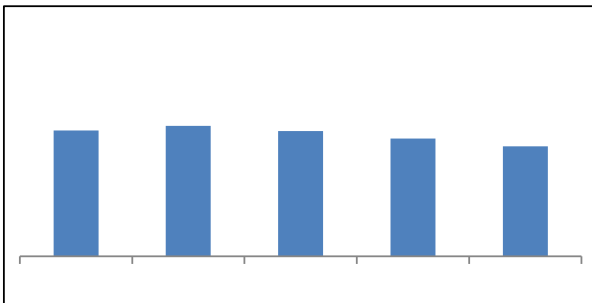


Chart 4. Age Distribution, 5-Year Trend*

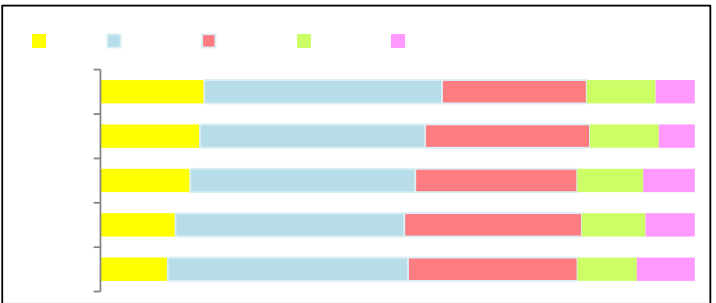


Chart 5. Credit Hours Trend: Total, State & Non-State

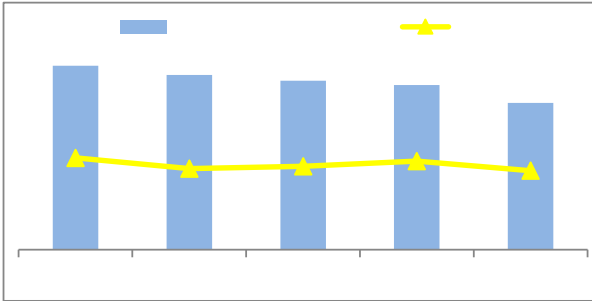


Chart 6. Race/Ethnicity Distribution, 5-Yr Trend*

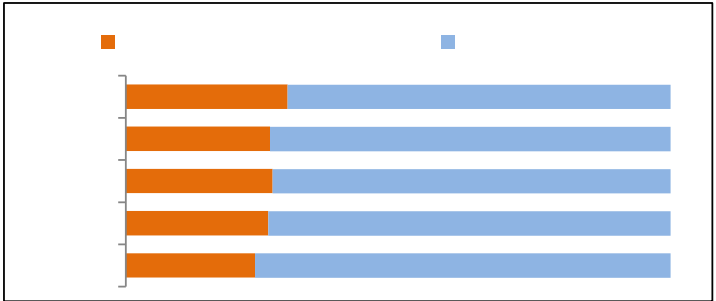
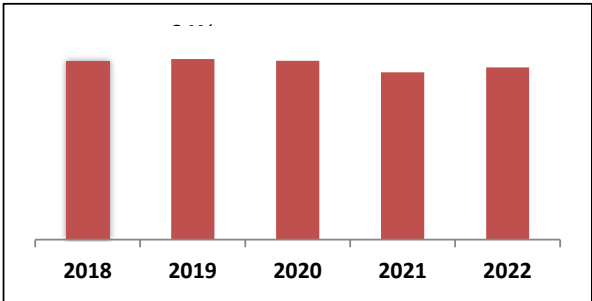
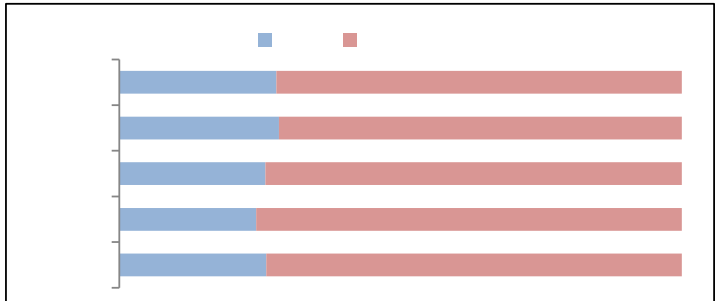


Chart 7. Percent MATRICULATING, 5-Year Trend



* based on only U.S. citizens/perm. residents who report race/ethnic id

Chart 8. New/Continuing Distribution, 5-Year Trend



*Percentages based on total who reported designated information (i.e., 'missing'/'unknown' data excluded from calculations)